

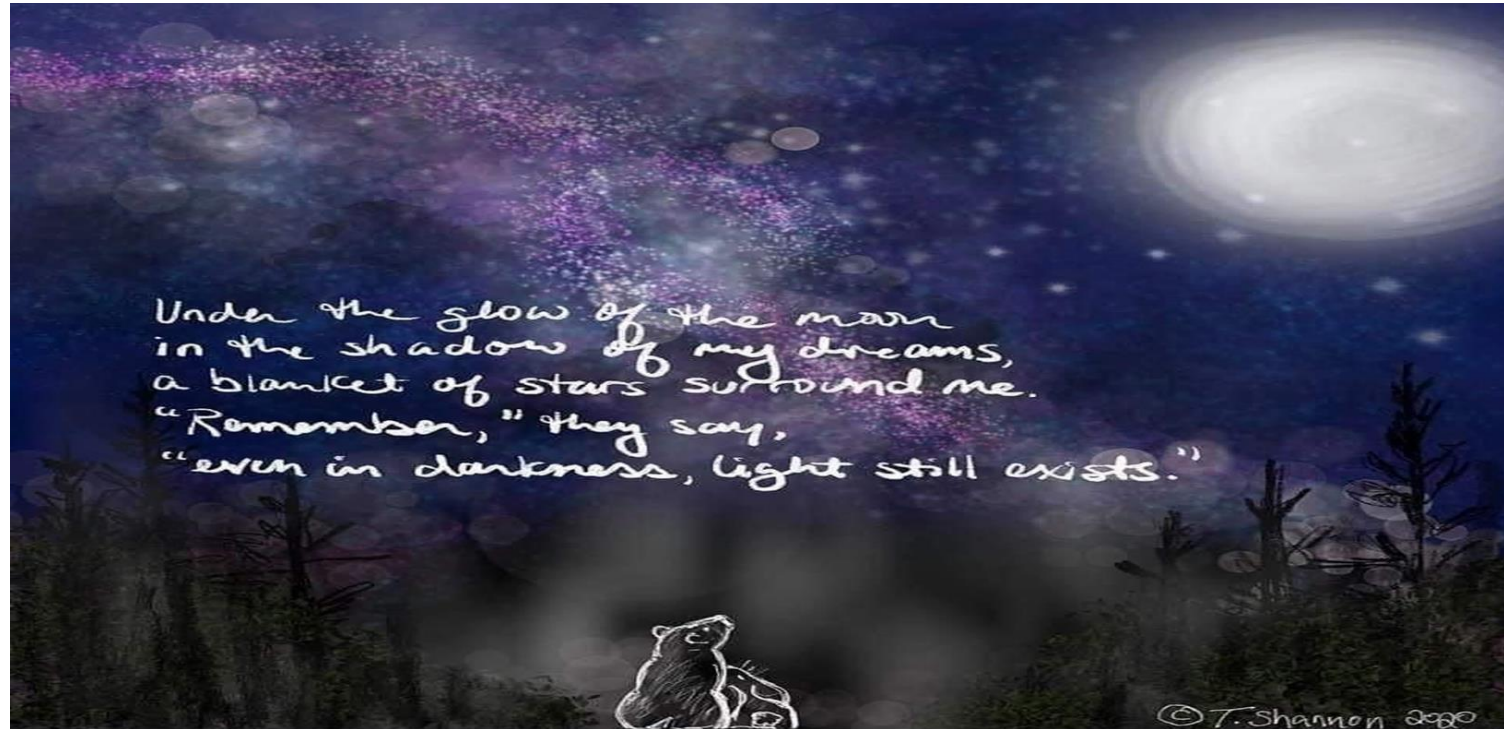


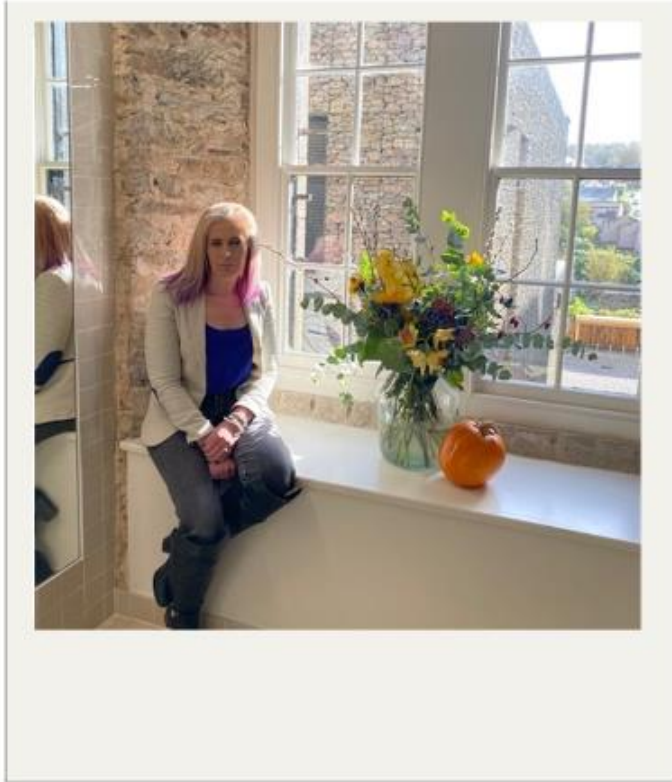
Focus on Sustainability

Me, you & the Integrated Care System (ICS)

Sarah Taylor – Head of Sustainability, Frimley Health and Care
Integrated Care System and NHS Foundation Trust

Rushmoor Voluntary Sector Forum 14th June 2023





Sarah Taylor

Head of Sustainability, Frimley Health and Care
Integrated Care System and NHS Foundation Trust

sarah.taylor223@nhs.net





Who and what is the Integrated Care system?





Who and what is the Integrated Care system?

Our Places

Bracknell Forest

- 3 Primary Care Networks
- 9 GP Practices
- 111,000 patient population*

North East Hampshire and Farnham

- 5 Primary Care Networks
- 22 GP Practices
- 235,000 patient population*

Royal Borough of Windsor and Maidenhead

- 3 Primary Care Networks
- 19 GP Practices
- 174,000 patient population*

Slough

- 4 Primary Care Networks
- 16 GP Practices
- 171,000 patient population*

Surrey Heath

- 1 Primary Care Network
- 7 GP Practices
- 98,000 patient population*

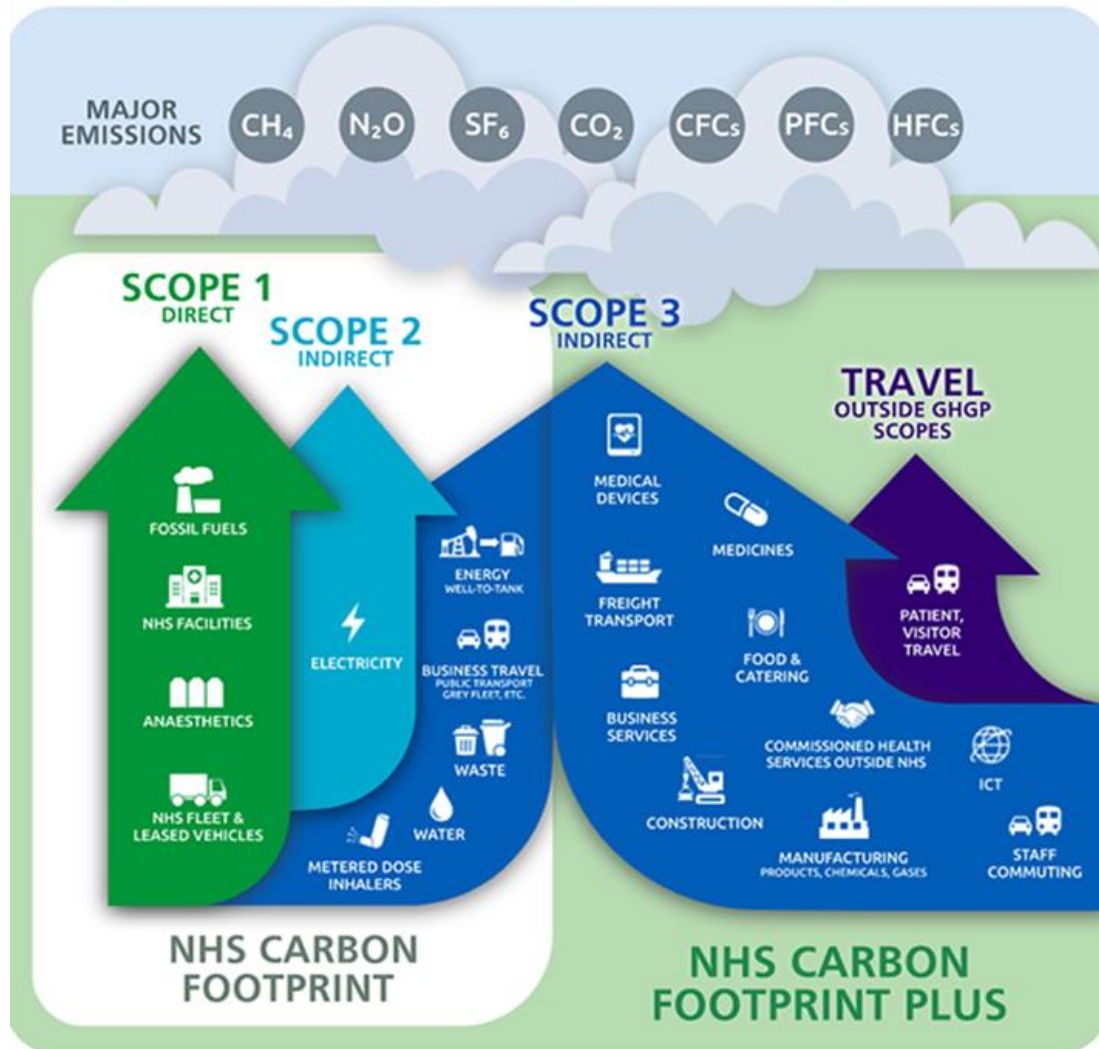
*Approximate patient population figures

Our Local Authorities





The carbon footprint of the NHS



In 2008 the Climate Change Act set national targets for the reduction of carbon emissions in England, against a 1990 baseline. Since then, the NHS has been working to deliver on these targets, most closely approximated by the NHS carbon footprint.

These targets do not, however, cover the full scope of emissions from the NHS. The Greenhouse Gas Protocol (GHGP) 25 scopes cover a wider set emissions, and support international comparison and transparency:

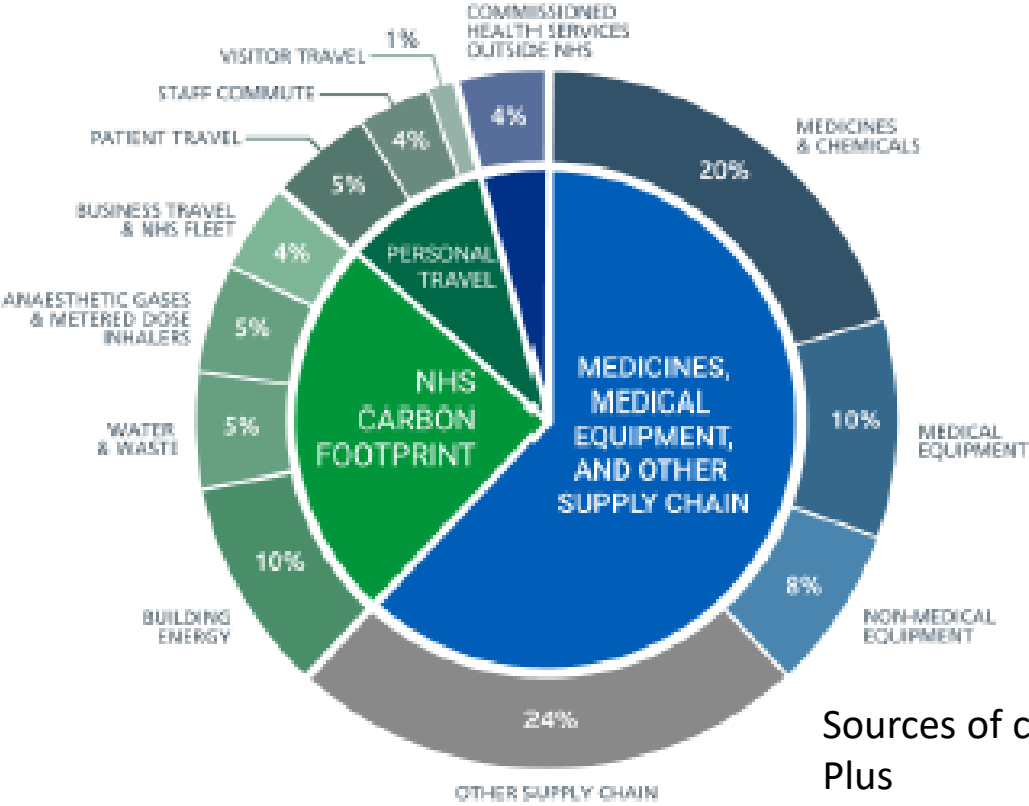
- 1: Direct emissions from owned or directly controlled sources, on site
- 2: Indirect emissions from the generation of purchased energy, mostly electricity
- 3: All other indirect emissions that occur in producing and transporting goods and services, including the full supply chain.



We have set two targets

- 1) For the emissions we control directly (the NHS carbon footprint), we will reach net zero by 2040, with an ambition to reach an 80% reduction by 2028 to 2032;
- 2) For the emissions we can influence (our NHS carbon footprint plus), we will reach net zero by 2045, with an ambition to reach an 80% reduction by 2036 to 2039.

To support the NHS's net zero ambition, new data collection methods are being developed to enable the more granular calculation of carbon footprints at regional, ICS and trust levels. The Greener NHS data collection was launched on 30 April 2021 to understand actions that are taking place over 2021/22 and provide a baseline from which progress can be understood.



Sources of carbon emissions by proportion of NHS Carbon Footprint Plus



How the green plan was written and will be delivered

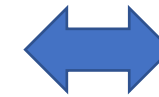
Stakeholder interviews and System-wide meeting attendance

Desk Research NHSEI, Frimley CCG & Local Authority guidance and plans



9 Green Plan areas of focus:

- Estates & Facilities
 - Travel and Transport
 - Food & Nutrition
 - Supply Chain & Procurement
 - Sustainable Models of Care
 - Climate change adaptation
 - Workforce & System Leadership
 - Digital Transformation
 - Medicines
- + Air pollution, social value, green space & biodiversity



- Improving outcomes in population health and healthcare
- Tackling inequalities in outcomes, experience and access
- Enhancing productivity and value for money
- Supporting broader social and economic development



Our ambitions - Good for people and the planet

Selection of Green Plan goals	Starting Well	Focus on Well-being	Community Deals	Our People	Leadership and Cultures	Outstanding use of resources
<i>Lower pollution from exhaust fumes</i>	✓	✓		✓	✓	
<i>More active travel</i>	✓	✓	✓	✓	✓	✓
<i>Improved diet with less processed meat</i>	✓	✓		✓		✓
<i>Access to more greenspace and biodiversity</i>	✓	✓		✓		
<i>Working together to create more material reuse schemes</i>		✓	✓	✓	✓	✓
<i>Acting to protect people and facilities from climate change impacts</i>	✓	✓	✓	✓	✓	✓
<i>Informing, engaging and involving staff and communities in this mission</i>			✓	✓	✓	
<i>Working with our Partners to co-create solutions</i>			✓	✓	✓	✓
<i>Increasing energy efficiency and low carbon energy self-reliance</i>			✓	✓	✓	✓

<p>Core Purpose of an ICS</p>	Improving outcomes in population health and healthcare
	Tackling inequalities in outcomes, experience and access
	Enhancing productivity and value for money
	Supporting broader social and economic development



What you can do to help

Good for the patient, good for the planet - Inhaler choice and greenhouse gases

Did you know - one puff can have the same carbon footprint as driving a whole mile in a car!

Thankfully there are newer inhalers available that do not have the same impact on the environment.

The most important thing is to ensure patients are empowered to keep the symptoms of their lung condition under control, so we're advising patients to speak with their healthcare team about these greener options or how their condition may be better managed to reduce the need for inhalers.



Aerosol inhaler

This type of inhaler has a carbon emission equivalent of driving **175 miles**. That's the same as driving from Frimley to Liverpool.



Powder inhaler

This type of inhaler has a carbon emission equivalent of driving **4 miles**. That's the same as driving from Frimley to Bagshot or Windsor to Slough.





What you can do to help

Walking Aid recycling at all our hospital sites



Return Reuse Recycle

We are supporting National Recycling Week (17th - 23rd October 2022)

To help make returning crutches, sticks or frames even easier for service users.



www.recyclenow.com/walking-aids



What you can do to help

Insulin pen recycling



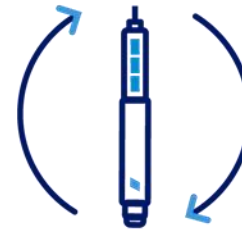
PenCycle



23
million
empty pens going
to waste



Using 100% renewable energy
across our global production
(which we have already achieved)



Re-designing both our existing
and future products to reduce
our waste



Working together with our supply
partners to make our processes
more environmentally friendly



What you can do to help

Share these messages and stay in touch



Find us and follow on social media



Visit our website

www.frimleyhealthandcare.org.uk

Get involved

www.frimleyhealthandcare.org.uk/get-involved

To volunteer as a Green Volunteer at the Trust please contact <https://www.fhft.nhs.uk/services/volunteers/volunteer-job-role-profiles/>



"There's so much uncertainty." said Bear

"What should we do?" asked Rabbit.

"There's no one answer." replied Bear.

"I know what to do." said Rabbit.

"I'll make tea."

"How will that help?"
asked Bear.

"It won't, not really.
Only for a moment
maybe. But in that
moment we can
catch our breath."

"And after that?"
asked Bear.



"We'll think about that when we get there."
said Rabbit.



Thank you for listening!



Any questions?