



RUSHMOOR

Climate Promise

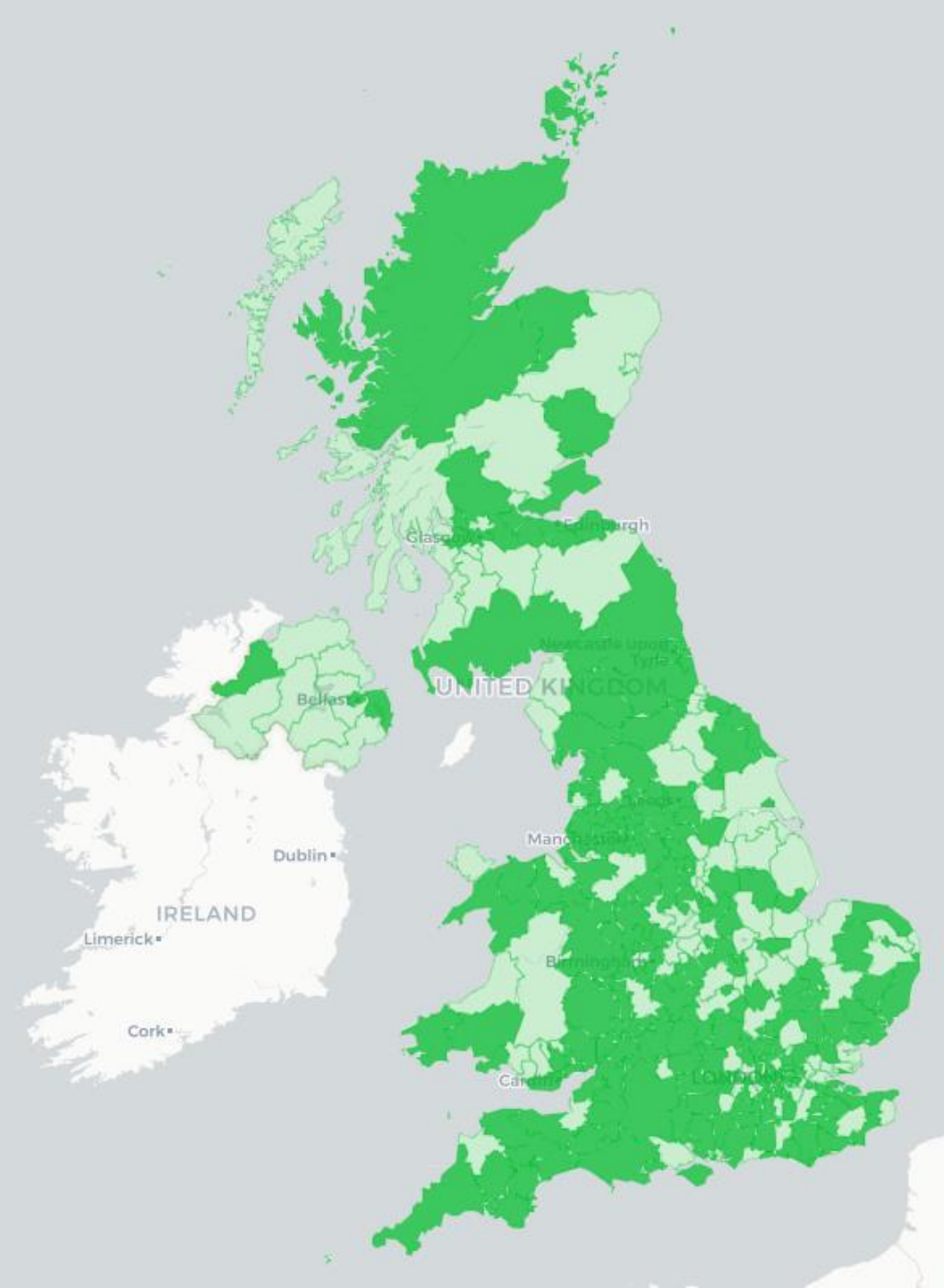
Climate Change

RUSHMOOR BOROUGH COUNCIL

RUSHMOOR
BOROUGH COUNCIL

DECLARING A CLIMATE EMERGENCY

- Over 300 Councils in the UK have declared a Climate Emergency since 2019
- Many of these have set a target of reaching net zero emissions by 2030 or earlier



RUSHMOOR BOROUGH COUNCIL

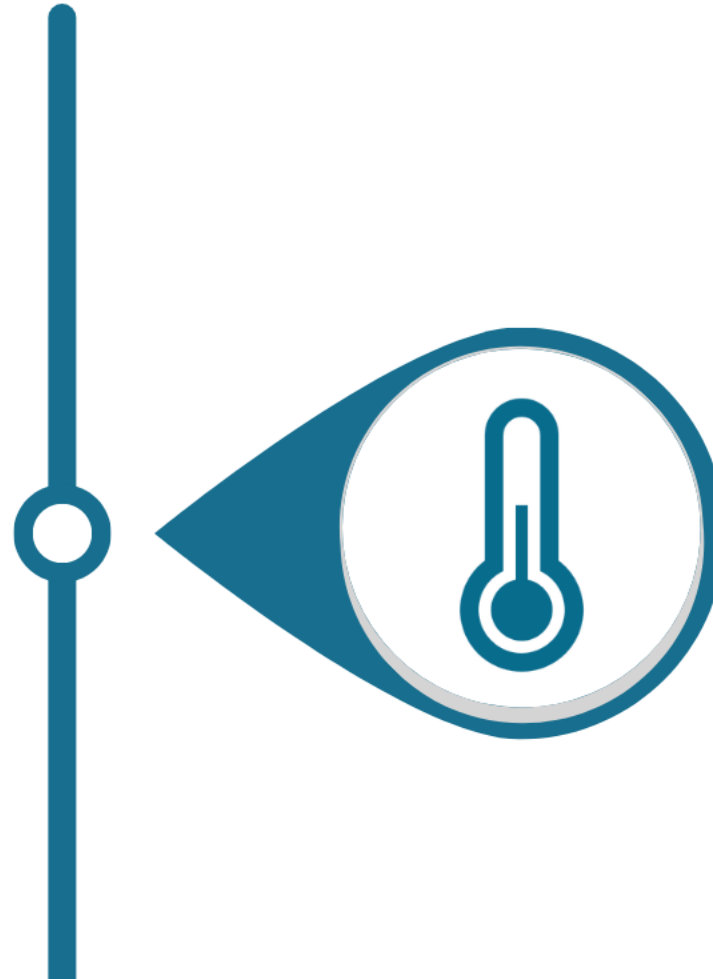
CLIMATE CHANGE TIMELINE

2019 - 2026

Declared a climate emergency with the aims:

- Carbon neutral Council by 2030
- To become a greener and more sustainable borough

JUNE 2019





JUNE 2020

Climate Change Strategy
(2020-2030) agreed

NOV 2020

Climate Change Action Plan
(2020-2030) agreed





2021

Carbon Footprint - Carbon Trust

- Carbon Footprint calculated for Council Operations (19/20)
- Carbon Footprint for the borough calculated (18/19)

Carbon Footprint - Sustrax

- Carbon Footprint for 21/22
- Aligned with GHG protocol
- New baseline for Council operations - accurate and comparable

2022



Target setting and carbon tracking

- Carbon Footprint Ltd.
- Recommendations for target setting

2023



JULY 2023

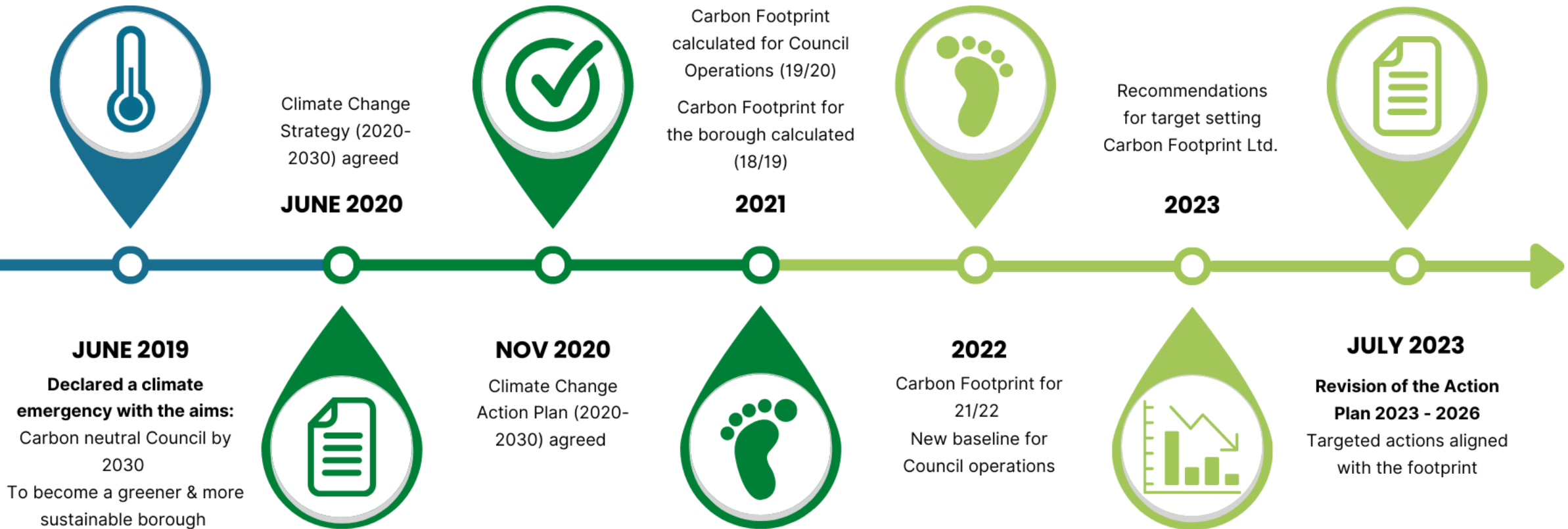
Revision of the Action Plan 2023 - 2026

- Targeted actions aligned with the footprint
- Aligned to bring our emissions as low as possible
- To achieve carbon neutrality by 2030

RUSHMOOR BOROUGH COUNCIL

CLIMATE CHANGE TIMELINE

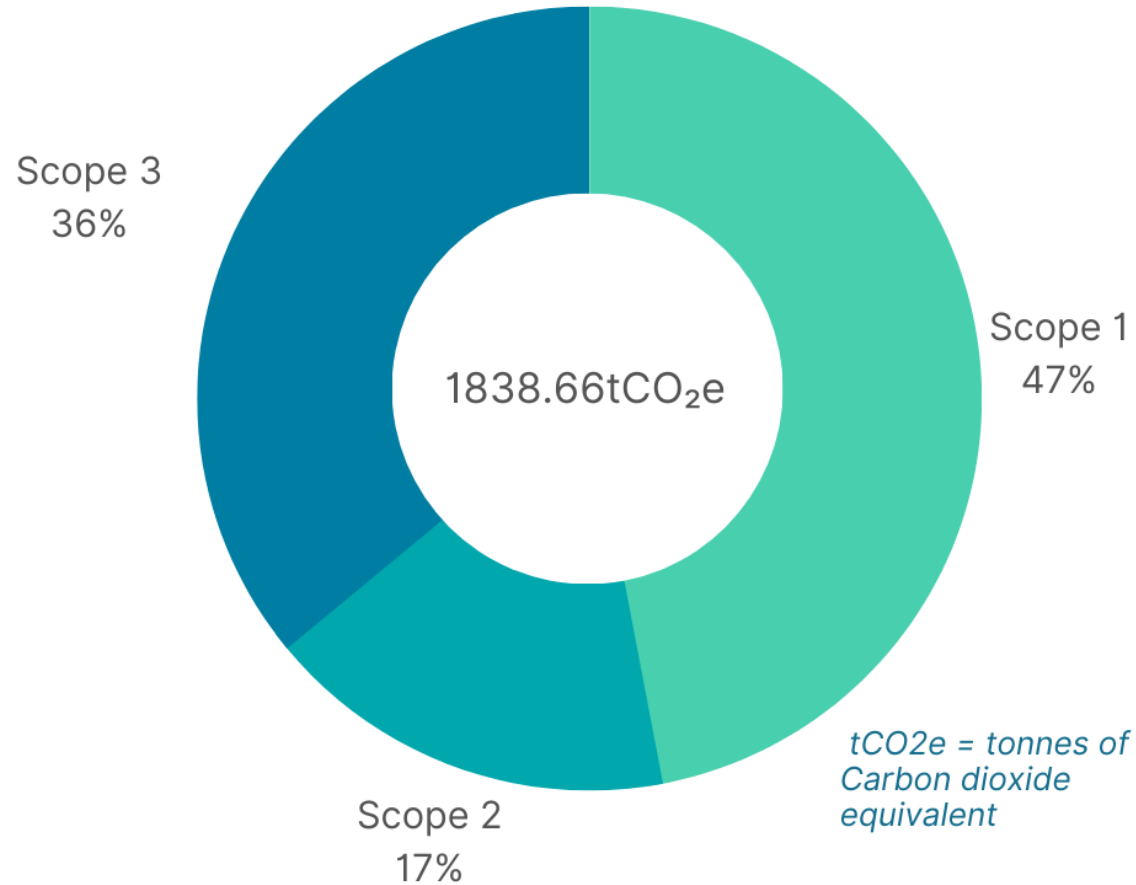
2019 - 2026



RUSHMOOR BOROUGH COUNCIL

CARBON FOOTPRINT

2021 - 2022



SCOPE 1

Direct Emissions

- Natural Gas (heating)
- Operational Fleet

SCOPE 2

Indirect Emissions

- Purchased Electricity

SCOPE 3

Indirect Emissions (supply chain)

- Staff Business Travel
- Paper
- Waste
- Water
- Purchased Goods



Young people engagement & School outreach



Food Waste collection roll out



Rushmoor Repair Café



Monitoring of carbon footprint, and emission reduction targeting - *Carbon Footprint Ltd.*



Southwood Visitor Centre



Joint working with HCC – *eg. Solar Together*

WORK DONE SO FAR



CURRENT & FUTURE PROJECTS





RUSHMOOR
BOROUGH COUNCIL

rushmoor.gov.uk/climatechange

SUSTAINABILITY@RUSHMOOR.GOV.UK